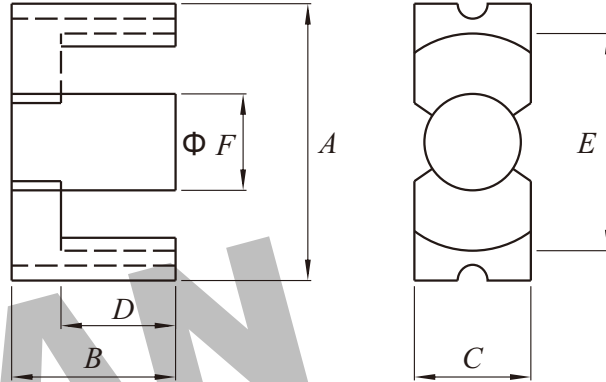




Dimension: (UNIT: mm)

A	41.6MAX
B	19.65-0.3
C	11.9-0.6
D	13.5+0.8
E	26.25Min
F	11.9-0.6
G	
H	

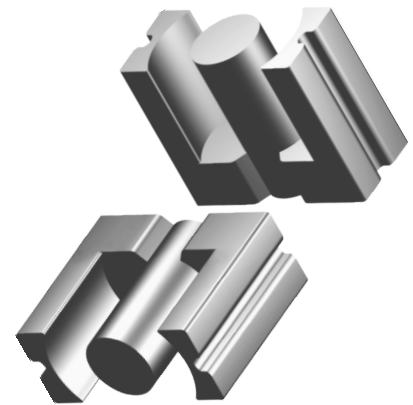


Test conditions

AL: F=1.0KHz U=0.3V N=10Ts

Effective parameter

C1(mm) <sup>4</sup>	Ae(mm)	Le(mm <sup>2</sup> )	Ve(mm <sup>3</sup> )	Weight(g)
0.735	121	89.3	10800	≈30



Core halves

AL measured in combination with an non-gapped core half, unless otherwise stated.

Grade	Grade	μe	AIRGAP μe	Type number
P3	100 ± 3%	≈59	≈2200	EC 41-P3
	160 ± 3%	≈94	≈1220	EC 41-P3
	250 ± 3%	≈147	≈705	EC 41-P3
	315 ± 5%	≈186	≈530	EC 41-P3
	400 ± 10%	≈236	≈390	EC 41-P3
	2700 ± 25%	≈1580	≈0	EC 41-P3

Properties of core sets under power conditions

Grade	B (mT)at	Core loss (w) at	
	H=250 A/m F=25KHz T=100℃	F=25 KHz B=200mT T=100℃	f=100 KHz B=100mT T=100℃
P3	≥320	≤1.3	≤1.4

Note

- 1:Document is the property of FUAN Inc & is not allow to be duplicated without authorization
- 2:RoHS compliant.